



The Juniper

4 Bedroom | Detached | 1,360 Sq Ft

The Juniper is an elegant four-bedroom detached home designed to offer spacious and flexible family living. Its open-plan living area with orangery forms the heart of the home, ideal for modern lifestyles and entertaining. Featuring a luxurious family bathroom and an en-suite to the master bedroom, this home combines comfort with style. An internal garage provides secure parking and additional storage, while the premium finishes and energy-efficient features throughout ensure a home that is both beautiful and practical.

IN BRIEF

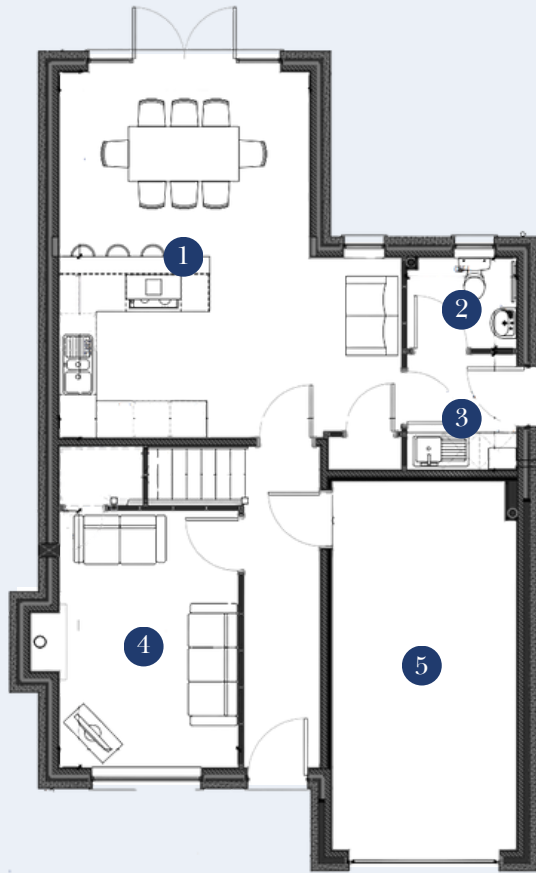
- Four bedrooms
- Living room with log burner
- Spacious open-plan living with orangery
- Bespoke SieMatic kitchen with utility room
- Luxury family bathroom and en-suite to master
- Private landscaped garden
- Integral garage
- EV charging point

AVAILABLE AT

Plot 2

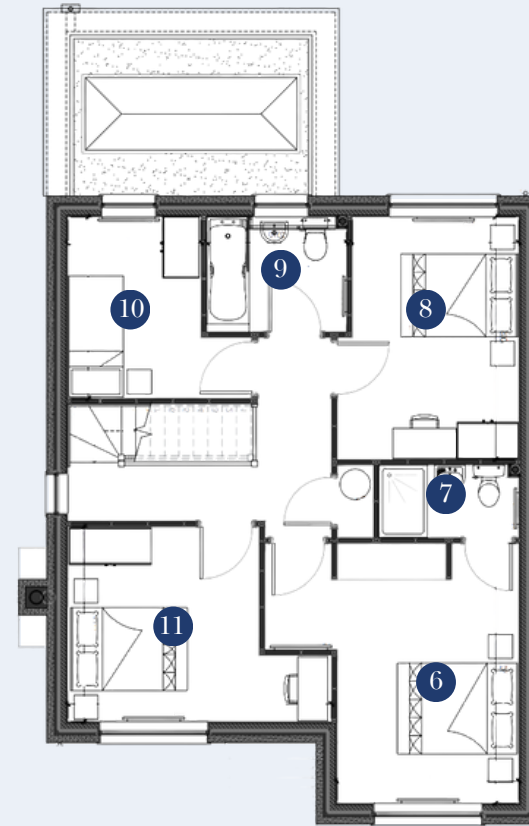
The Juniper

4 Bedroom | Detached | 1,360 Sq Ft Plus Garage



GROUND FLOOR

1.	KITCHEN/DINING	5.5 X 6.0M
2.	WC	1.8 X 1.5M
3.	UTILITY	1.8 X 1.9M
4.	LIVING ROOM	2.9 X 4.2M
5.	GARAGE	3.1 X 6.1M



FIRST FLOOR

6.	BEDROOM 1	3.0 X 4.3M
7.	ENSUITE	2.3 X 1.2M
8.	BEDROOM 2	2.8 X 4.0M
9.	BATHROOM	2.3 X 1.9M
10.	BEDROOM 3	2.2 X 3.0M
11.	BEDROOM 4	4.4 X 3.2M