



# The Chestnut

4 Bedroom | Detached | 1539 Sq Ft Plus Garage

*The Chestnut is a charming four-bedroom detached home that combines traditional warmth with contemporary style. The living room features a cosy log burner, creating an inviting space to unwind, while the spacious open-plan kitchen and dining area is perfect for entertaining. A practical utility room adds convenience, and the master bedroom benefits from a luxurious en-suite. Outside, a private landscaped garden and external garage complete this well-rounded family home, finished with the high-specification touches and energy-efficient features characteristic of Newchurch Meadows.*

## IN BRIEF

- Four bedrooms
- Large living room with log burner
- Spacious open-plan living
- Bespoke SieMatic kitchen with utility room
- Luxury family bathroom and en-suite to master
- Private landscaped garden
- External garage
- EV charging point

## AVAILABLE AT

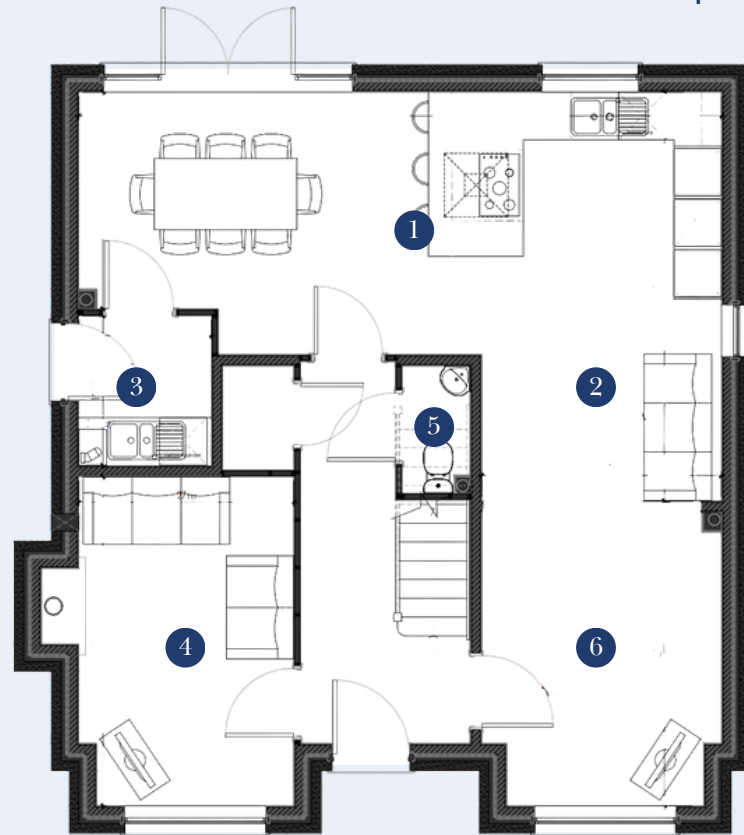
Plot 17

Plot 18



# The Chestnut

4 Bedroom | Detached | 1539 Sq Ft Plus Garage



GROUND FLOOR

1.	KITCHEN/DINING	8.1 X 2.7M
2.	FAMILY	3.1 X 2.7M
3.	UTILITY	1.7 X 2.7M
4.	LOUNGE	2.7 X 4.2M
5.	WC	0.9 X 1.6M
6.	LOUNGE	3.0 X 3.7M
7.	GARAGE	3.0 X 6.0M



FIRST FLOOR

8.	BEDROOM 1	3.8 X 3.8M
9.	ENSUITE	1.2 X 2.6M
10.	BEDROOM 2	3.1 X 3.4M
11.	BATHROOM	2.0 X 2.1M
12.	BEDROOM 3	3.7 X 3.8M
13.	BEDROOM 4	4.3 X 2.1M